

mrk

INSTRUCTION MANUAL

Blender - BL -166BTZ



HerdsKing Europe GmbH

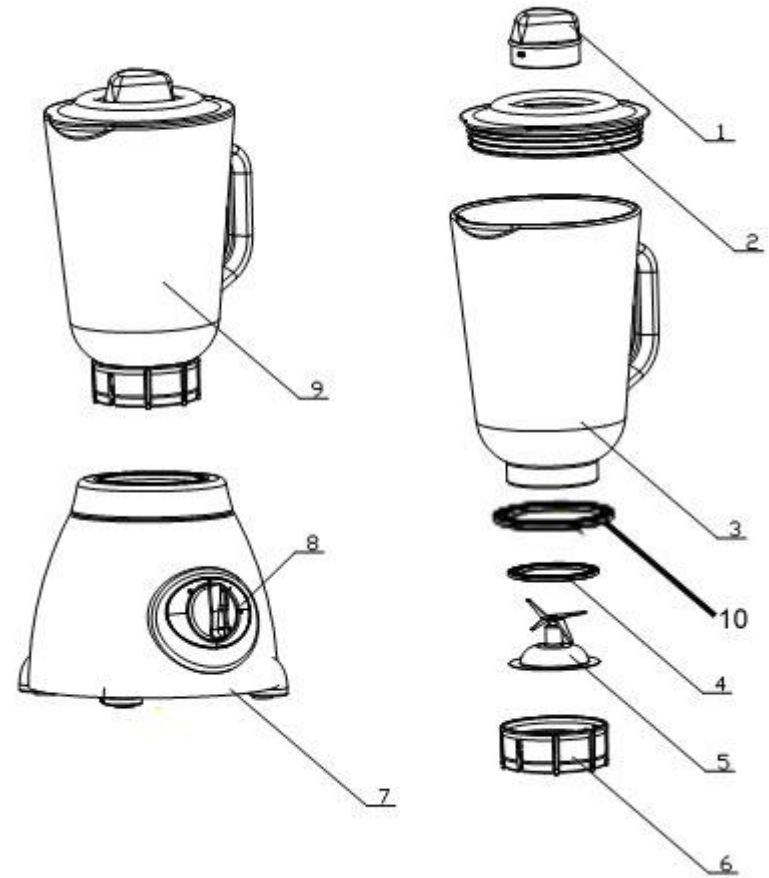


Fig.1 Assembling of mixing jar

- | | | | | | |
|---|---------------|---|----------------------|----|-----------------------|
| 1 | Measuring cup | 5 | Blade block | 9 | Mixing jar with cover |
| 2 | Lid | 6 | Cup base | 10 | Safety ring |
| 3 | Glass jar | 7 | Motor block | | |
| 4 | Sealing ring | 8 | Speed control button | | |

General Safety Instructions

1. Please read the information and safety advice contained in these operating instructions carefully and thoroughly, before you use the blender for the first time.
2. The appliance should only be used for its intended purpose and is not fit for commercial use.
3. Make sure that the voltage shown on the rating label corresponds with that of the mains supply. The rating label can be found on the bottom of the motor block. Before you connect the blender to the 220V AC mains supply, make sure this appliance is switched off (speed control switch 8 in the "0" setting).
4. To avoid electric shocks do not use this appliance near water. Do not immerse the mains lead in water or other liquid. Danger of electric shock!
5. Do not use outdoors. Keep it away from sources of heat, direct sunlight, humidity (never dip it into any liquid) and sharp edges. Do not use it with wet hands. If the appliance is humid or wet, unplug it immediately.
6. Always switch off the appliance, when you do not use the appliance, when you replace accessories, when you clear the appliance or when the appliance is defect. Do **not** operate the machine without supervision. If you leave the room, you should always turn the appliance off. Pull out the plug from the socket.
7. Do not try to repair the appliance on your own. Always contact an authorized technician. To avoid the exposure to danger, always have faulty cable be replaced only by the customer service or by qualified person (electrician) and with a cable of the same type. Use only original spare parts.
8. The appliance should be used and stored out of the reach of children. Careful supervision is required, when it is used by or in the vicinity of children. Never allow your children to play with the appliance unsupervised.
9. This appliance is not intended for use by persons (including children) with reduced physical, sensory or mental capabilities, or lack of experience and knowledge, unless they have been given supervision or instruction concerning use of the appliance by a person responsible for their safety.
10. No liability is accepted for damages caused by improper use or failure to observe our operational instructions and safety advices.

Social Safety Precaution for this Device

- 1 Switch off the appliance and disconnect from mains power supply before changing accessories or attachments, which are moving during operation.
- 2 Make sure the accessory part is fitted correctly and placed firmly before switching on.

- 3 Before use, place the appliance on a flat level and sturdy surface. **No** objects, such as spoons or dough scrapers, are allowed to insert into the bowl, when the appliance is in operation.
- 4 During use, never touch moving parts with your fingers.
- 5 Unplug the appliance when not in use or before cleaning.
- 6 Never use the machine with a damaged power cord! Let the customer service or qualified person (electrician) repair the cable to avoid any danger of electric shock. Be careful while cleaning the blender jar. The blades are very sharp.

Technical Specifications

Model No.:.....BL-166BTZ
Power supply:.....220-240 V~, 50/60 Hz
Rated power consumption:.....600 W
Max. power consumption:.....800 W
Protection class:.....I
Max.. liquid amount of mixing jar.....1,5 liter

These Data are subject to change without prior notice!

EC Directives of Conformity

The manufacturer hereby declares that the blender BL-166BTZ complies with all current relevant European directives such as

- 2004/108/EG - Electromagnetic Compatibility Directives
- 2006/98/EG - Low Voltage Equipment Directive
- 2002/72/EG - LFGB The European Commission Directives and BfR Recommendation
- 2002/95/EG - EG-Directive The Restriction of the Use of certain hazardous Substances in Electrical Equipment Directives (RoHS)
- 2004 GPSG - Equipment and Product Safety Law
- 2002/96/EC - The Waste Electrical and Electronic Equipment (WEEE) and is manufactured according to the latest safety regulations

Intended Use

1. This appliance serves as mixer for mashing, beating, mixing.
2. It is intended solely for this purpose and should only be used therefore. It may only be used in the way, as described in this instruction manual.
3. You may not use the device for commercial usage. Any other use is considered inappropriate and may even lead to property damage or personal injury.
4. The manufacturer assumes no liability for damages caused by improper use.

Check before Blender Assembly

Please see Fig. 1

Check the pre-assembly! Safety ring (10), sealing ring (4), blade block (5) and cup base (6) must be assembled in correct order.

- 1 Never forget to place the sealing ring on the blade assembly; otherwise the mixing container will leak.
- 2 Do not attach the cup base askew.
- 3 The open side of the safety ring is locked with the cup base.
- 4 You need only to lift the mixing jar up vertically to remove it, instead of rotating it.

Blender Assembly and Operation

1. Cut all ingredients in small pieces.
2. Fill the ingredients into the mixing jar. Observe the maximum capacity.
3. Press the lid (2) down on the mixing jar. The mixing jar must be perfectly sealed.
4. Close the lid with the measure cup (1). Observe the recesses on the inner side of the lid. Turn the measuring cup clockwise to tighten.
5. Place the mixing jar on the mixing drive shaft. Incorrect assembly will prevent blender operation.
6. Connect the mains cable to a properly installed and earthed 220 – 240 V~ 50/60 Hz wall outlet.
7.

<u>Speed Control Adjustment</u>	<u>Application</u>
• Speed "1-2"	for easy mixing of liquids
• Speed "3-5"	for more solid consistency - for mixing liquids and solid foodstuffs
• "P"	for ice-crushing and short, powerful pulse movements (The switch does not permanently engage in the "P" setting. You have to hold the switch in the "P" setting or turn it repeatedly into the "P" setting)

Blender Application Instruction

1. **WARNING: The blade in the blender is sharp!**
 - 1.1 Never reach with your hands into the assembled mixing jar!
 - 1.2 **Handle it with great care! Risk of injury**, especially when removing the blade from the mixing container, or emptying and cleaning the mixing jar.
 - 1.3 Do not pour liquid ingredients hotter than 60°C into the mixing container! **Danger of burns!**
2. **WARNING: Risk of injury!**

- 2.1 The mixer starts turning, when the appliance is switched on. Do not touch the rotating mixer during operation!

3 CAUTION:

- 3.1 Do not place hard ingredients such as nuts or coffee beans in the mixing jar.
- 3.2 The blade in the mixing jar is not suitable for crushing ice cubes only.
- 3.3 Do not use the blender without ingredients!

4 RECOMMENDATION:

- 4.1 When preparing drinks with crushed ice only add the ice cubes during mixing. The ice cubes will be crushed during mixing.
- 4.2 Place the mixing jar on a stable and solid surface during filling. In this way it is easier to attach the lid.
- 4.3 Do not exceed the maximum capacity (1500 ml) as indicated on the mixing container!
- 4.4 Attach the lid in such way that the round tab seals the **connection link** of the mixing jar.
- 4.5 Only take the appliance into operation after attaching lid and fastening the measuring cup!
- 4.6 Do not remove the lid during operation!

IMPORTANT NOTE: Do not store citrus juices or acidic foodstuffs in metal containers.

Refill Ingredients

1. Switch the appliance off.
2. Fill in ingredients or spices through opening the measuring cup
3. Close lid and measuring cup again.
4. Continue operation.

Stop Operation

1. Switch the appliance off.
2. Disconnect from mains power supply.
3. Remove the mixing jar.
4. Remove the lid before pouring out the contents.
5. Clean all used parts as described under "Cleaning".

Cleaning

1. Before cleaning, place the speed control button at the setting of "0" and disconnect the device from mains power supply.
2. Do not submerge the appliance into water. This may lead to electric shock or fire.

3. Do not use a wire brush or other abrasive utensils for cleaning and do not use aggressive or abrasive cleaning agents.
4. Cleaning motor housing: Clean the housing only with a damp cloth and a squirt of washing-up liquid. Dry with a cloth.
5. **The plastic accessories, mixing jar and blades inside must be cleaned with warm water and washing-up liquid or in dishwasher. Do not use any abrasive detergents..**

Packing list

- Blender housing 1 set
- Blade block 1 set
- Mixing jar 1 set
- Instruction manual 1 piece

Manufacturer Warranty

1 Coverage of Warranty

- 1.1 This warranty confers upon you specific rights and remedies against our products. By making a claim under this warranty, you will be deemed to have understood and accepted its terms.
- 1.2 We grant a warranty of 24 months beginning from the purchasing date for European customers. Prerequisite of our warranty claim is the purchase of our appliance in Germany offered by us or by one of our authorized dealers as well as sending us a copy of the purchasing voucher and warranty sheet. If the appliance is abroad at the time of warranty claim, the warranty service is rendered at the buyer`s expenses for to and fro transport.
- 1.3 The warranty period cannot be prolonged due to warranty reparation. There is no right to claim for a new warranty period. This warranty is a voluntary service provided by us as the manufacturer of the appliance. The statutory warranty rights (such as rectification, cancellation, compensation and reduction) are not affected by this warranty.
- 1.4 Defects must be reported to us in a written form within 14 days after discovering the defects. In case of a warranty right, we will decide what kind of defect should be dealt with and whether to repair it or to replace a similar one.

2 Exclusions and Limitations

The warranty does not extend to:

- 2.1 Any product not manufactured by or for us,
- 2.2 Defects based on the non-compliance with instructions for use, improper handling or normal abrasion of the device,
- 2.3 For fragile parts, such as glass or plastic parts, warranty claims are excluded, if the repairing

work for the appliance is not done by our authorized service.

3 Warranty Claim Processing

- 3.1 For all complaints and / or warranty claims please contact our service department by e-mail at kontakt@herdsking.de or by phone under **+49 (0)2152 555 6399, +49 (0)2152 892 5571**.
- 3.2 After reviewing your warranty claim, we will send you a RMA form to fill in per e-mail. Please fill out this RMA form with your name, domicile (street, house number, postcode and place), telephone number and e-mail address. In addition, we need **a copy of your proof of purchase (receipt, invoice, delivery note) and a brief description of the defect reasons with the model number. Without the warranty proof, your complaint cannot be processed free of charge.**
- 3.3 Upon your information, we will issue a RMA-No. for the retour of the defect appliance and arrange the forwarder to pick-up it. What you need to do now is to get prepared for your well packed product with your original purchase proof, ideally in the original package, to pass to the appointed forwarder.
- 3.4 The Delivery takes place free of charge for the buyer within Germany. The transport charge back and forth is obliged for the buyer outside Germany. Please do not use a non-free delivery to return the appliance to us. Should you use the non-free delivery, your warranty claim will be inapplicable.
- 3.5 RMA Retour address:

**Herdsking Europe GmbH
Von-Ketteler-Straße 13
D-47906 Kempen
Germany**

Environmental Protection: Disposal – Meaning of the “Wheelie Bin” Symbol

Information for (private householders) for the environmentally responsible disposal of Waste Electrical and Electronic Equipment (WEEE)



1. Take care of our environment; do not dispose of electrical appliances via the household waste.
2. Dispose of obsolete or defective electrical appliances via municipal collection points.
3. Please help to avoid potential environmental and health impacts through improper waste

disposal.

4. You contribute to recycling and other forms of utilization of old electric and electronic appliances.
5. Your municipality provides you with information about collecting point.